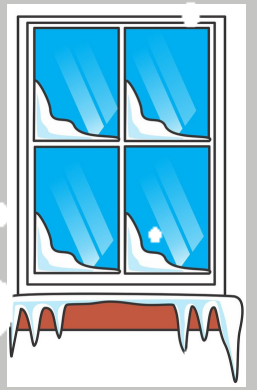
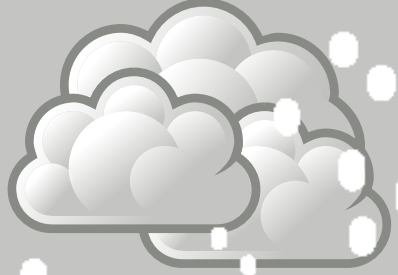




The Mommy Corner

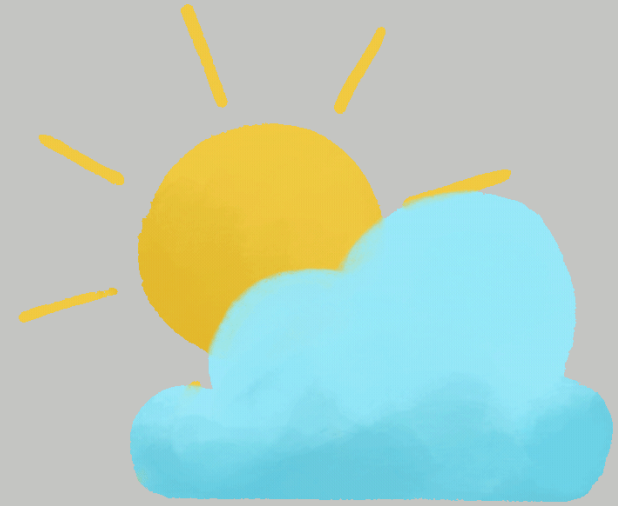
冬天的形容词

Dōngtiān de Xíngróngcí



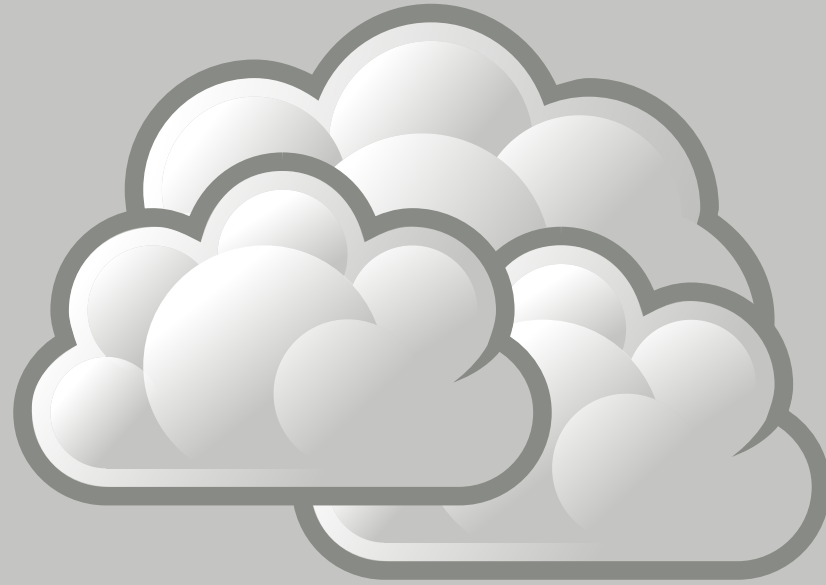


chilly



寒冷的

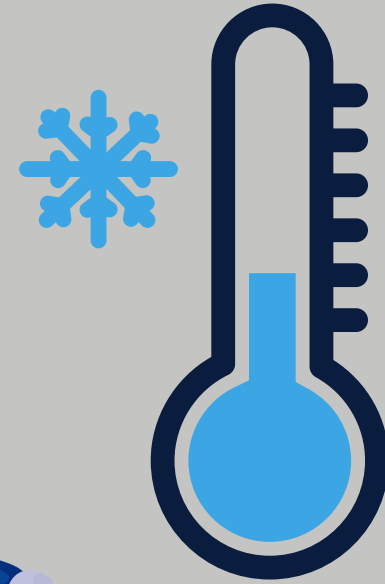
hánlěng de



cloudy

多云的

duōyún de



cold

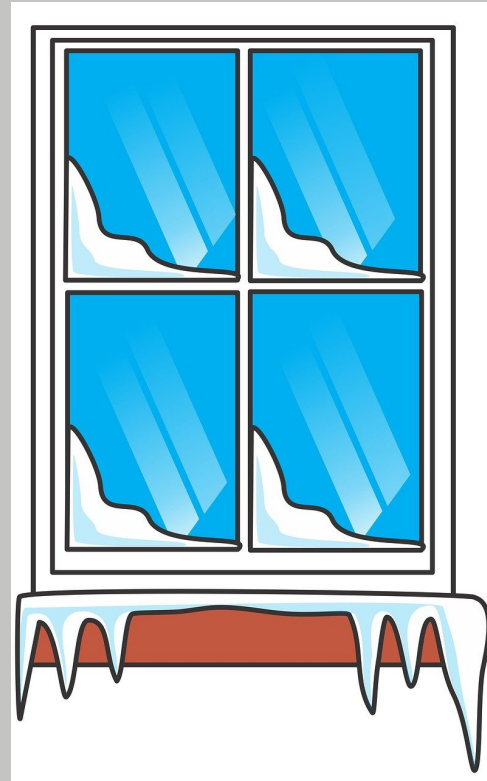
冷的
lěng de



dreary

沉闷的

chénmèn de



freezing

极冷的
jī lěng de



frozen

冻硬的

dòng yìng de



frosty

严寒的

yán hán de



foggy

有雾的

yǒu wù de



icy

冰冷的

bīng lěng de



misty

多雾的

duō wù de



slippery

湿滑的

shī huá de



snowy

下雪的
xià xuě de



white

白色的
bái sè de